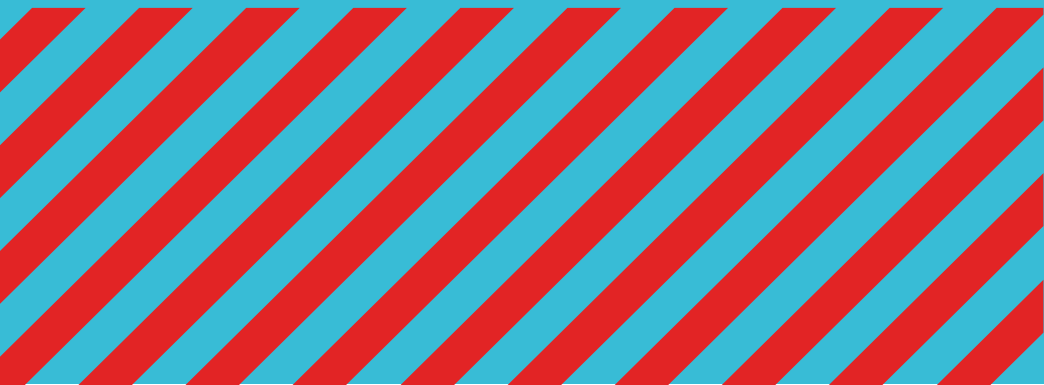




Kraft *Heinz*

KITT GREEN

MANUFACTURING & ENGINEERING
CAREER OPPORTUNITIES



SO WHAT IS HAPPENING AT KITT GREEN?

Kraft Heinz's vision is to be the best food company, growing a better world

To help deliver this vision and continue to deliver world class performance on their Kitt Green manufacturing facility, Kraft Heinz have decided to create 40+ new leadership positions including:

- Engineering Managers
- Engineering Team Leaders
- Production Team Leaders

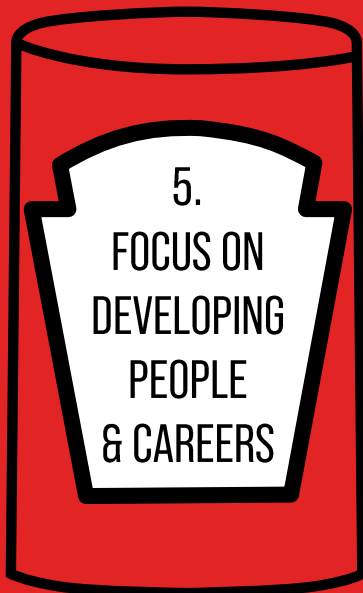
This transformation is intended to increase the proximity of the leadership to their teams and bring more ownership & accountability at all levels.

Kraft Heinz believe this will deliver further increases in efficiencies, reduce duplications of activities and allow for more agility in decision making

If this sounds like a journey you're keen to be on then keep reading!



REASONS TO BE INTERESTED



1. WORK FOR THE ICONIC KRAFT HEINZ!



\$26bn

In net sales
[2018]*



5th largest

food and beverage company in
the world



40+

countries with
dedicated Kraft
Heinz Company
employees



8x

\$1 billion+ brands
based on retail
and foodservice sales



2bn+

meals to hungry
children over the
last decade through
philanthropic focus

OPPORTUNITY TO MANUFACTURE ICONIC BRITISH PRODUCTS SUCH AS



2. LARGEST FOOD SITE IN EUROPE

1st

Largest food site in Europe

\$90m

In Capex spend over the last 3 years

1,600,000 ft²

Production & Storage space of site

960

Operational employees on site

5th

Largest food site in the World

\$15m

In planned Capex Spend in 2020

1 billion

Cans produced a year

13

Production lines & 9000 assets on site



IF YOU WANT TO LEARN MORE ABOUT THE SITE, WATCH THE CHANNEL 5 DOCUMENTARY. JUST CLICK THE My5 LOGO



3. VALUES OF OWNERSHIP & INTEGRITY

At Kraft Heinz & Kitt Green, the values aren't just something on the wall. We really live them:

Ownership



We do the right thing at all times. We inspire trust. We are honest and ethical



We think and act like owners of our business



We have a culture of meritocracy that recognizes and rewards exceptional performance at every level

Integrity

Consumer First

To be the best food company, growing a better world

Innovation

Quality

"The culture at Kitt Green is like a competitive family, we are always in search of the next big challenge to conquer!"

Anton – Shift Operations Manager



4. STRONG LEADERSHIP & CULTURE



“The key benefits of working for Kraft Heinz is the ability to grow, develop your skills and challenge yourself; if you have the determination and drive there are many possibilities to progress.”

We have a strong culture at Kitt Green and we are very team orientated and performance driven. The jobs are demanding and the environment tough but very rewarding. We have a strong CI culture and are always striving to be better.

That’s what excites me about Kitt Green; the demanding environment and our continuous push for manufacturing excellence & to be a World Class Manufacturer, which is why I joined in the first place!”

Sean McAnna, Head of Integrated Manufacturing at Kitt Green



4. STRONG LEADERSHIP & CULTURE

Working in Kraft Heinz/Kitt Green will give you the opportunity to be an entrepreneur inside a major multinational.

We pride ourselves on being a company where individuals have the space to treat the business as their own, where proposals for change & improvements will always be given an opportunity. With a lean structure, decisions and communication happen fast, allowing true value to be created where the potential exists.

This genuine ownership makes the environment dynamic, rewarding and intense...as your own business would be!

We are experiencing a unique and pivotal moment in Kitt Green's history, where great effort is being given to our continuous improvement practices in order to make a step up in terms of performance. The chance of joining us on that phase will be enriching for an individual's career and present significant learning opportunities.

We are working towards being a benchmark in the industry, which will only be achieved with exceptional people. And our new structure will be the ideal opportunity to get this journey started.

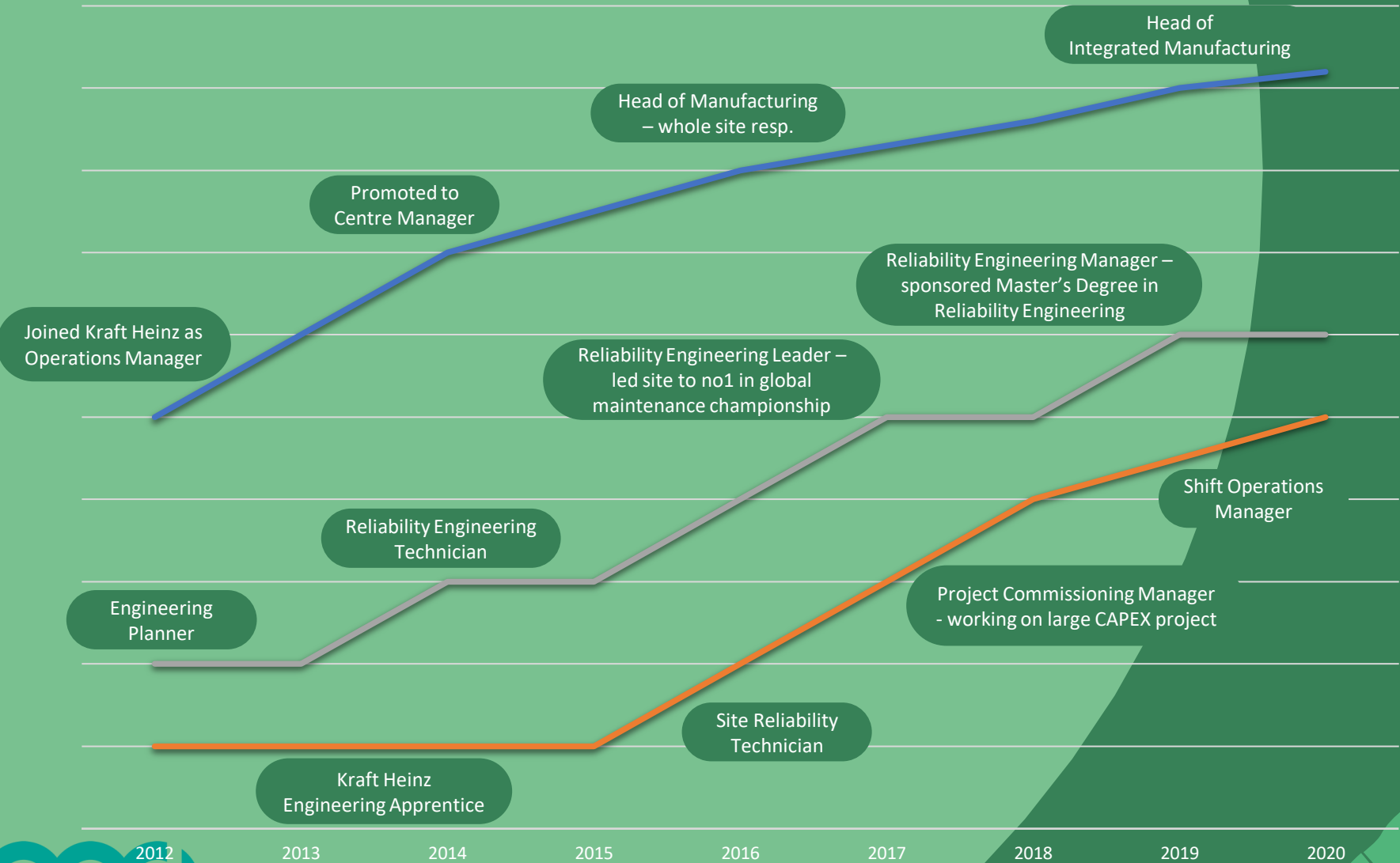


Luis Filipe Spinardi , Site Director at Kitt Green



5. FOCUS ON DEVELOPING PEOPLE & CAREERS

Kraft Heinz are committed to the development of their staff offering continued learning opportunities as well as progression



Sean McAnna



Patrick Reeves



Anton Hickey



6. EXCELLENT SALARY & REWARDS

Kraft Heinz like to reward hard work and when people go the extra mile. To do this we have an excellent package & bonus structure which recognises high performance

SALARY

TEAM LEADER:
Circa £40,000

MANAGER:
Circa £45,000

SHIFT
ALLOWANCE

20% DAY SHIFT
PREMIUM

40% NIGHT SHIFT
PREMIUM

BONUS

20% ANNUAL BONUS
FOR TEAM LEADERS

25% ANNUAL BONUS
FOR MANAGERS

HEALTH
CARE

PRIVATE
HEALTHCARE
& LOTS OF OTHER
BENEFITS

PENSION

MATCHED +2%
PENSION SCHEME



7. GOOD WORKING HOURS AND HOLIDAY

The shifts on offer at Kraft Heinz are very family friendly and allow for good work life balance

SHIFT A	DAYS Week 1: Mon - Fri 6am-2pm Week 2: Mon - Fri 2pm-10pm	SHIFT B	DAYS Week 1: Mon - Fri 2pm-10pm Week 2: Mon - Fri 6am-2pm	SHIFT N	NIGHTS Production: Mon - Fri 10pm-6am Engineering: Sun-Thu 10pm-6am
--------------------------	--	--------------------------	--	--------------------------	--

You also get more than the standard amount of holiday days. with the option of buying up to 3 days more!

27 DAYS HOLIDAY
+
BANK HOLIDAYS

